



Kingsland Road, London, E2

BUTLER & STAG



Fantastic one bedroom flat located close to the picturesque canal in highly sought after Haggerston. This great one bedroom apartment is also moments from the sights and sounds of Shoreditch, Hoxton and Dalston making it home for a discerning professional couple.



- Available 26th August
- Wooden Flooring
- First Floor
- City Location
- Part Furnished
- Close To Transport
- Modern Kitchen
- Close to Haggerston and Hoxton Stations.

Situated in the Heart of Haggerston, this large one bedroom apartment is surrounded by the vibrant areas of Haggerston, Hoxton, Shoreditch and Broadway Market and is a must let for city dwellers.

The property comprises of secure rear entrance to the shared hallway, large lounge living area, a separate kitchen, large double bedroom and modern bathroom.

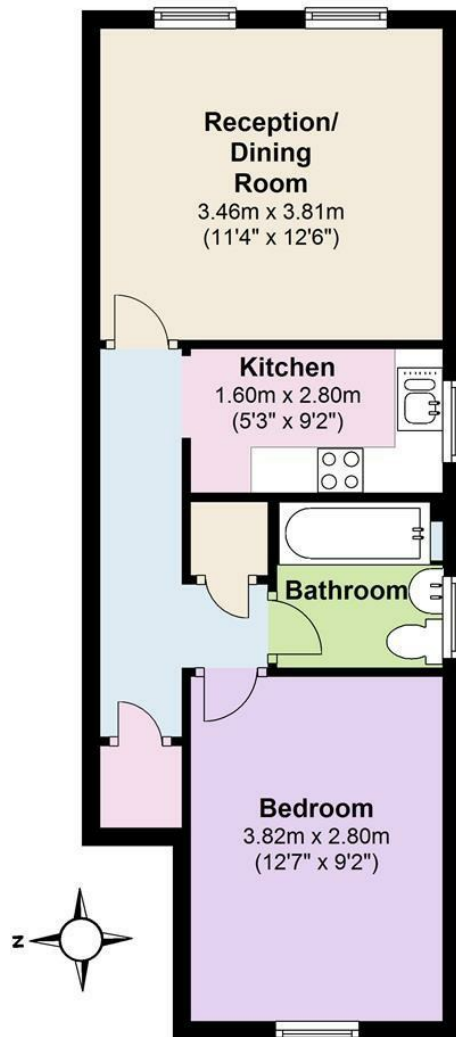
Located close to both Haggerston and Hoxton stations and within walking distance of the bars, restaurants and cafes of London's most vibrant district.





First Floor

Approx. 38.1 sq. metres (409.7 sq. feet)



Total area: approx. 38.1 sq. metres (409.7 sq. feet)

For illustration purposes only - not to scale

IMPORTANT NOTICE - These particulars have been prepared in good faith and they are not intended to constitute part of an offer or contract. We have not performed a structural survey on this property and the services, appliances and specific fittings have not been tested. All photographs, measurements, floor plans and distances referred to are given as a guide and should not be relied upon.

BUTLER & STAG

☎ 020 8102 1236

🏠 508 Roman Road, Bow, London, E3 5LU

✉ bow@butlerandstag.com

www.butlerandstag.uk